

Newsletter

JULY 2022

COVER STORY: **QUEEN'S PLATINUM
JUBILEE CELEBRATIONS**

FEATURE: **SHARED LIVES WEEK IS
MARKED WITH SERIES OF
PICNICS**

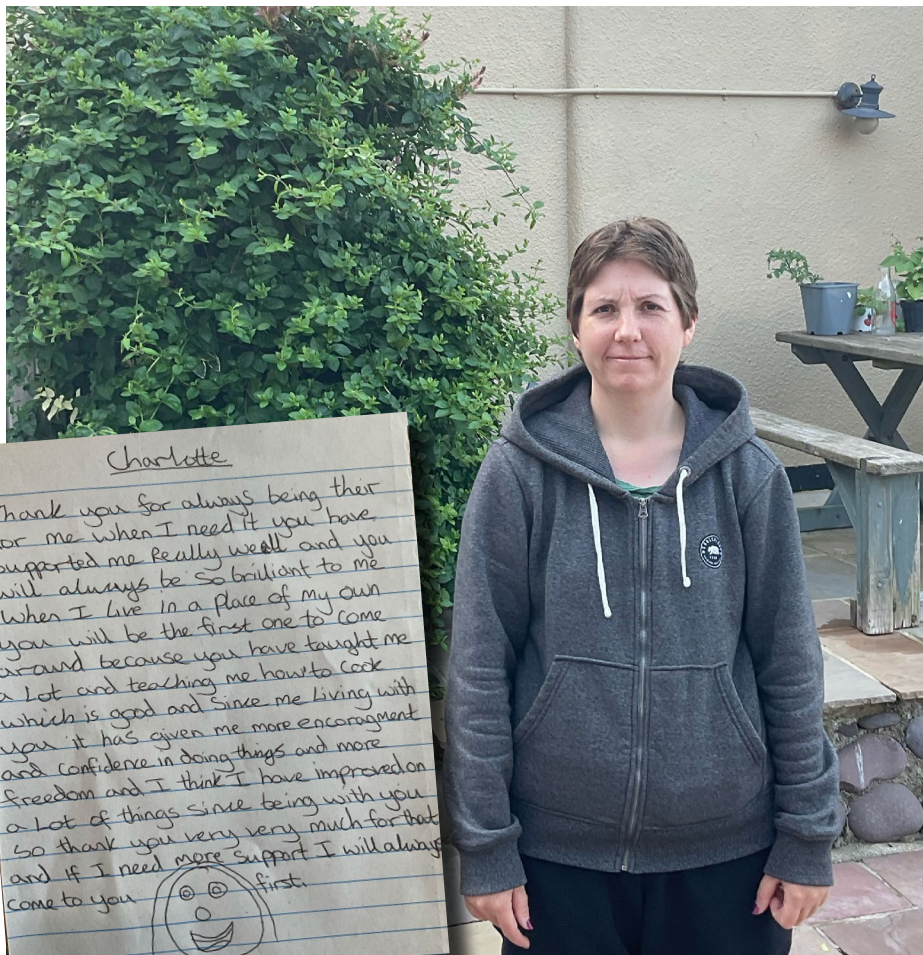
PHOTOS: **FUN HOLIDAYS AND
DAYS OUT FOR SLSW
HOUSEHOLDS**



Pictured: Gillian at a Jubilee event.



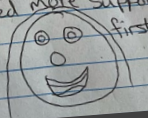
Alec and Mark enjoyed a weekend in Paignton with SLSW Carers Gary and Samantha Turner.
It looks like you had a fun time!



Kay, who uses SLSW services, wrote in to praise her carer Charlotte Kemp. She said: "Since living with Charlotte I have gained more confidence, I have been able to practice my cooking skills like making omelettes. I am now really good at it. I'm also helping to prepare Chilli con carne and other simple things.

"I am very proud that I am able to do these things because Charlotte has supported me really well and I am very grateful for that." Kay also wrote Charlotte this lovely letter.

Charlotte
Thank you for always being there for me when I need it you have supported me really well and you will always be so brilliant to me when I live in a place of my own you will be the first one to come around because you have taught me a lot and teaching me how to cook which is good and since me living with you it has given me more encouragement and confidence in doing things and more freedom and I think I have improved on a lot of things since being with you so thank you very very much for that and if I need more support I will always come to you first.



We have welcomed Samantha Chalk to our Funding and Benefits team. Here catch up with her to find out more about her...

What were you doing before coming to SLSW?

I worked for Seetec Pluss, many know it as Pluss and that was taken over.

I worked as an Assistant Employment Coach.

Why Shared Lives?

I wanted a new challenge, but really wanted to still work with people with disabilities and do a job worthwhile.

How have your first few days been at SLSW?

It's been interesting and I've had a warm welcome.

I have some benefits knowledge which has proven helpful.

There is so much to learn, but I'm getting there.

What do you enjoy doing in your spare time?

I am a motorcyclist.

I've ridden pillion for years and now have my full licence.

I love ride outs and am part of Devon Highwaymen group who raise money for charities. Our Sundays are



spent going out on the bike. We call it a bimble, where we go out on a casual ride. Aside from that I like gardening and making my garden look pretty.

What do you think you will bring to the Funding and Benefits team?

Enthusiasm for the new role and always trying to be the best for the people we support.

I hope I can be useful to the team.

What three things would

you take to a desert island?

A radio to listen to music and crafting materials as I like knitting teddy bears as gifts. Lastly I'd take a supply of tea as I'm a big tea drinker.



Betsi Filbey has joined our admin team.

Betsi is based in the Cornwall office...

How are you finding SLSW?

I have really enjoyed my first few weeks and it's been really nice getting to know the teams. Chloe Boyd, my colleague, has been amazing at helping me settle in to my new job role and everyone has been so welcoming. I look forward to getting to know the carers and people we support in the coming weeks.

What made you think about applying to work at SLSW?

When I was coming to the end of my maternity leave, I decided I wanted a change and came across the opportunity to work for SLSW. The organisation struck me as one I would love to be a part of and the role suited me to the ground.

Had you heard of SLSW before?

I hadn't heard of SLSW before this role, but loved the concept of recruiting people to be carers in their own home and allowing the people we support to have a level of independence in a home environment.

What role were you doing before SLSW?

Prior to SLSW, I worked in



retail management. I had been in retail since I was 17, so I knew I was ready to move on. I felt that it came to a natural end once I had my daughter in September last year.

What will you bring to the team?

I think I can bring a serious level of organisation, think Monica from Friends, with a reasonable sense of humour. I am also very friendly, approachable and really enjoy working in a team environment.

Tell us a little bit about yourself

I live near Truro with my

boyfriend, baby girl and dog. Since lockdown, I discovered a love of DIY and upcycling and annoy my other half endlessly with changes and new ideas for the house. We also love taking the dog out and exploring!

If you could take three things to a desert island what would they be and why?

I would take my little family, I'm classing them as one. I'd also take my dog and a hammock for avoiding spiders when I sleep and to use as a net.





It looks like Jamie had a great time staying with SLSW Carer Tracey Bunt. They enjoyed a trip to the beach and a barbecue! It looks wonderful!





“Angelina took part in a regional RDA dressage competition. We're so proud, she did well,” said SLSW Carer Judith Nayler, who supports Angelina.



What fun photos!
"Christine is seen here being buried at the beach along with Chloe, who has stayed with us for the first time for respite," said SLSW Carer Lynn Fidler.



We catch up with new admin team member Nick Jessup to find out how he's finding his role at SLSW in the Devon office...

How are you finding SLSW?

I am finding the atmosphere to be very positive and everyone is really welcoming.

What made you think about applying to work at SLSW?

I wasn't actively searching for a new role however this particular role appealed to me and thought it would be a good fit.

Had you heard of SLSW before?

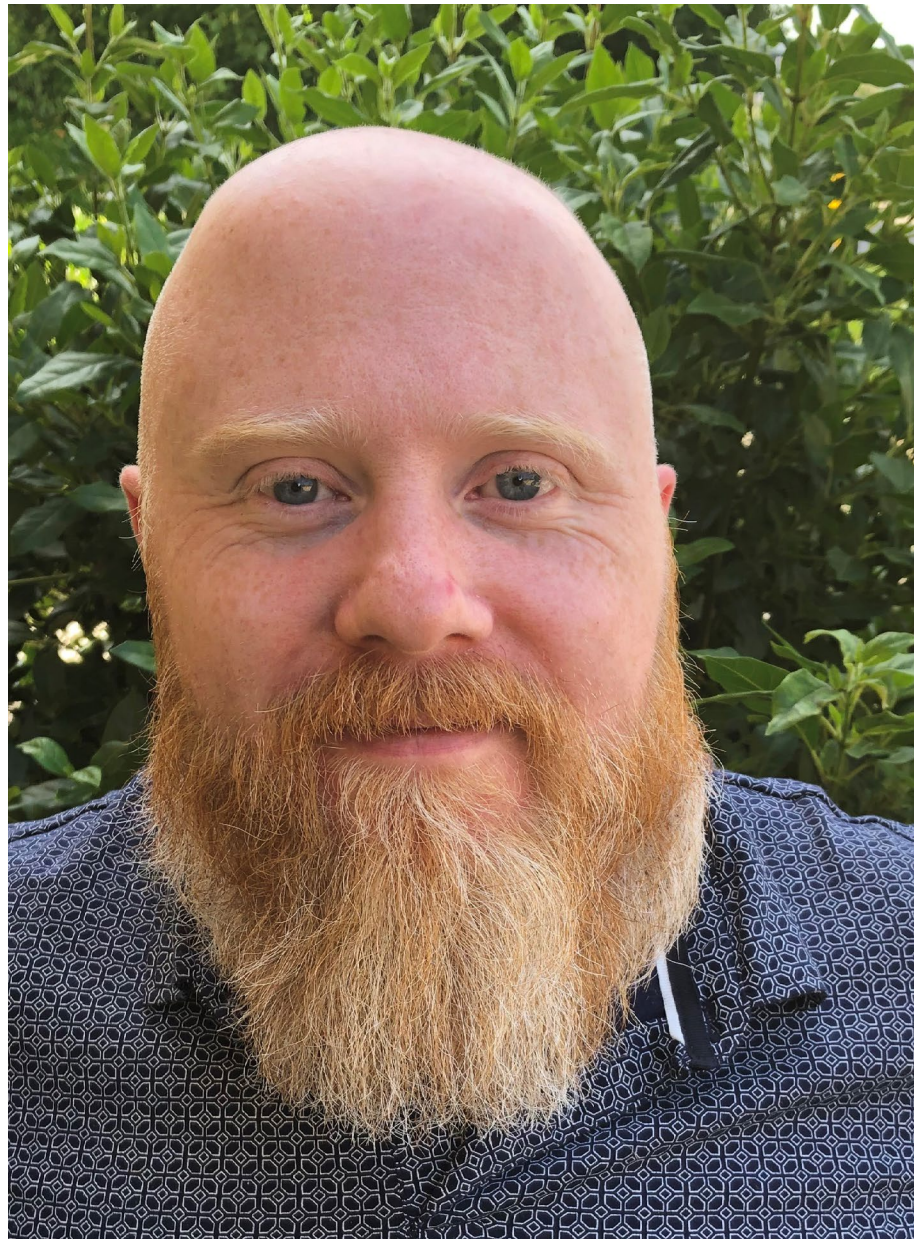
My mother and father-in-law have been carers for Shared Lives since 2020, which has given me an insight into the way in which Shared Lives helps provide support for people.

What roles were you doing before SLSW?

Prior to joining SLSW I have been working from home for Waitrose Customer Care and during the pandemic I was part of a team providing guidance for people who either tested positive or were listed as a contact.

What will you bring to the team?

I hope to add value in as many ways as I can. I have patience and want to be an effective



team member and have a laugh along the way.

Tell us a little bit about yourself

I live locally and can often be found with my Westie Ted down at Teignmouth. I like city breaks, basic astronomy, gaming and I follow West Ham and England football team.

If you could take three things to a desert island what would they be and why?

An endless supply of factor 50 sun cream because I wouldn't last long without it!
A powerful telescope as the light pollution would be minimal and access to my Steam gaming library to pass the time.

That blue sky and view looks wonderful!
SLSW Carer Sue Kane and Trevor, who she supports, have enjoyed a holiday to Spain.



Two SLSW households came together to enjoy the Royal Cornwall Show. SLSW Carers Pam Bowman and Diane Milligan had a great time with Robert, Robert, Adrian and Sharon who they support



SLSW households went to town to celebrate the Queen's Platinum Jubilee.

We were sent so many wonderful photos of events and celebrations- all featuring GB flag colours red, white and blue! It looks like everyone had a fantastic time during the special celebration.







Team Leader Ed Bunce-Phillips and SLC Holly Anderson attended the SEND conference in Plymouth. This annual event provides opportunities for parents and carers to hear from guest speakers and meet local providers.

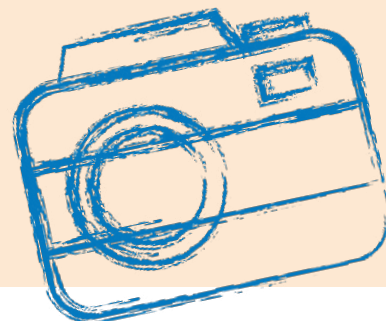


"This was the first fish of the season for Bob at the Waie Inn in Zeal Monachorum, he landed five so still has the knack," said Caroline O'Sullivan, his SLSW Carer. "No fish were harmed and went swimming on their merry way."

Photos!

We love seeing your photos and hearing your news.

Don't forget to send photos to:
dgillingwater@sharedlivesw.org.uk



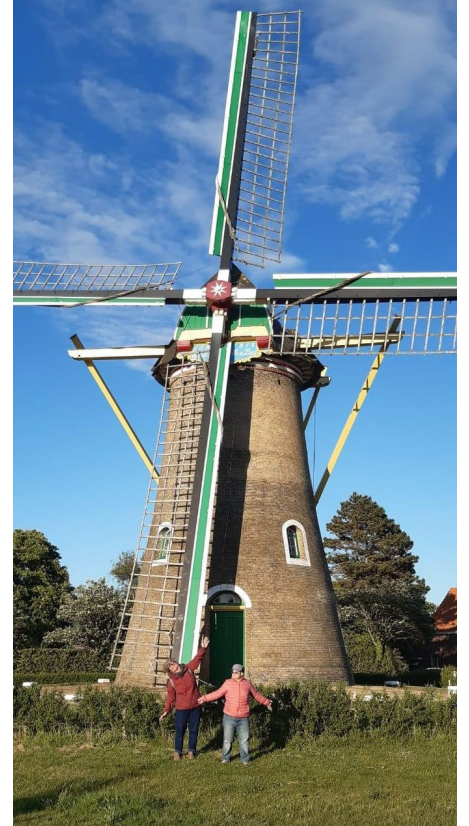


Wendy, her SLSW Carer Sam Robertson and Sam's daughter Tegan, enjoyed a girl's day out at a garden centre recently. They had a wonderful time. Pictured are Wendy and Tegan.



Sharon has been enjoying the warmer weather and fabulous walks. She is seen here at Penrose and has been out rambling with SLSW Carer Tracey Bunt





What wonderful photos of Gareth on holiday in Holland, visiting the family of his SLSW household. He is supported by SLSW Carers Marc and Chrissie Walpot. Marc has family in Holland including his Dad, who Gareth is seen playing Scrabble with. It looks like it was a fabulous trip away.



Emma Cavinder who lives with carers Mandi and Shaun Brooks. She has knitted herself a jumper – with a little help from Mandi’s mum.



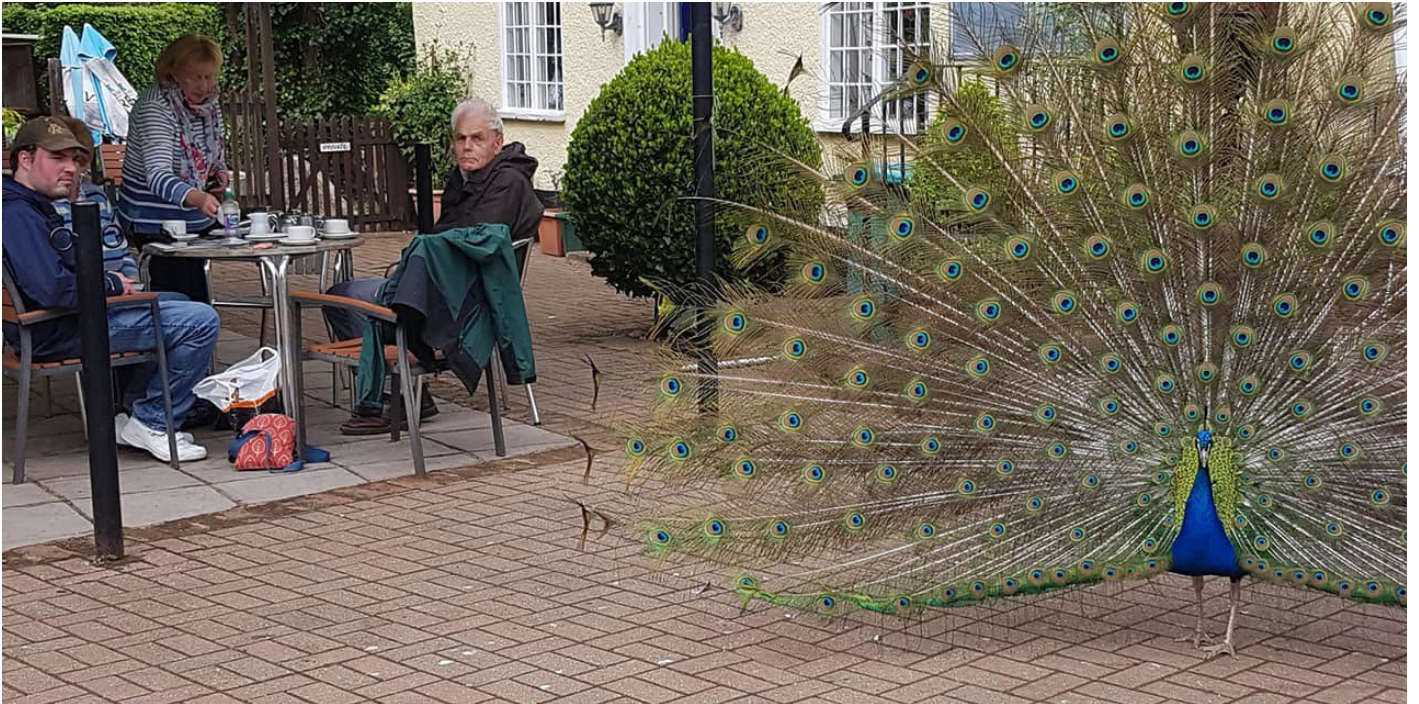
"Charlene and myself had a girly day out shopping and a lovely meal out in Plymouth," said SLSW Carer Lisa Dougal. They live together in Exmouth.





Wow what an experience for Damion!
He recently went on a hot air balloon trip with
his SLSW family.
He lives with SLSW Carer Heather Cocks.
It looks incredible!





"Gavin and John enjoyed meeting up with old friends and a woodland walk at Bickleigh," said SLSW Carer Caroline O'Sullivan. "During tea and cake in the garden, we were treated to this spectacular display, it was a lovely surprise."
It sounds like you all had a wonderful afternoon.



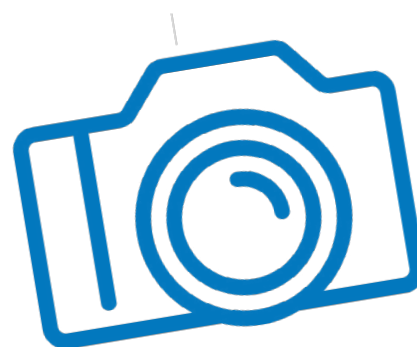
John has been enjoying days out with his Support Carer Paul Tulley. He's been on the train to Barnstaple, enjoyed some time at the Donkey Sanctuary, visited National Trust Knightshayes and Castle Drogo. What a busy and lovely time.



Wow look at the sea of poppies. How beautiful. Sharon went on a walk with SLSW Carer Tracy Bunt at Polly Joke, Cornwall



Best friends Helen and Gillian enjoyed lunch together recently. What a cracking photo! Helen is supported by SLSW Carer Dawn Jago and Gillian by SLSW Carer Tracey Chase.





Charlene has been on her first holiday abroad with her boyfriend Matthew and SLSW Carer Lisa Dougal.

"We went on buggy safari, jeep safari. Charlene also went scuba diving and played volleyball in the swimming pool, which she loved," said Lisa.



SLSW



A big happy birthday to Mollie! She celebrated her 21st with her SLSW Carer Mae Playdell-Pearce in Somerset. She did some painting and in the evening went for a lovely meal out.





Laura had a wonderful time when the fun fair came to Crediton recently! She is supported by SLSW Carer Melissa Boardman.



A big well done to Jenny, who is supported by SLSW Carer Nicola Drewett. This was from the Coastline, Miners Court Facebook page where Jenny volunteers twice

a week. They hosted a special lunch at the end of Volunteers Week to thank their volunteers for all they do.



Well done to Kay! She sent in these photos of her making cottage pie with support from her SLSW Carer Charlotte Kemp. Kay and her brother Dan enjoyed it! They are both supported by Charlotte in Somerset.







SLSW families around the three counties came together to celebrate Shared Lives Week. Picnics were hosted across Cornwall, Devon and Somerset and thankfully the sun shone, so everyone could really enjoy the festivities. Thank you to all who attended.



A big thank you to SLSW families who gave their time to help us produce some great videos about our services and the great work SLSW Carers do. These have been shared on our social media channels as part of Shared Lives Week. You can view them on our YouTube channel.



Robert had a great time at Mazey Day, the highlight of Penzance's week-long Golowan Festival. He is seen here with his SLSW Carer Diane Liddle and family friend Kathryn.



A broken down car didn't stop SLSW Carer Richard Holland and Neil, who he supports getting out and enjoying the sunshine! They ended up catching the bus to Teignmouth instead and enjoyed a drink watching the sea.





Happy 20th birthday to Lucas who celebrated with this wonderful cake! Lucas is supported by SLSW Carer Jo Crocker in Cornwall.



Find us on online...

 [sharedlivessouthwest](https://www.facebook.com/sharedlivessouthwest)

 [@sharedlivesSW](https://twitter.com/sharedlivesSW)

 www.sharedlivessw.org.uk

The deadline for the October newsletter is September 26

If you have any questions or comments about this newsletter or any stories you'd like to share with us, please do get in touch - we would love to hear from you!

Telephone: 01626 360170 / 01209 891888/ 01460 477980

Email: dgillingwater@sharedlivessw.org.uk